

# Woodside Warbler



## Woodside Church of England Primary School

Tel—01827 715507

admin@woodside.heartwoodmat.co.uk

www.woodside-ce-school.co.uk

18th June 2021

Issue 13

### Covid

The Local Authority and Public Health England are continuing to urge everyone to remain vigilant and continue to test regularly.

All staff in school are continuing to carry out LFD tests twice a week at home and I ask that you also test regularly at home and report the results on line, regardless of the result. This helps give a clear picture to the Government of local outbreaks and trends..

Please report all positive result to the school office and ensure that guidelines relating to self isolation are followed. The advice previously given remains just as important as it was to prevent the spread of Covid:

- Wash hands regularly
- Wear a face covering in public places
- Keep social distance from those you do not live with
- Ensure you keep doors and windows open when having visitors at home

**PLEASE ENSURE YOU HAVE A FACE MASK ON WHEN COLLECTING AND DROPPING OFF YOUR CHILD**

### Arrangements for the End of Term

As the easing of lockdown restrictions has been delayed until 19th July, please see below for confirmation of arrangements in school as we near the end of the school year:

- ♦ We will be holding an 'adapted' Sports Day during the week commencing 12th July. Unfortunately due to lockdown restrictions, parents will not be able to attend this event
- ♦ Induction morning will take place in school on Wednesday 7th July, when all children will meet their teacher and teaching assistant for September
- ♦ Reports will be distributed by email this year. It is anticipated they will be sent out on either 15th or 16th July. Please ensure that we have your correct email address on file
- ♦ Covid restrictions mean there will be no opportunity for parents to come in to school for our usual Summer Open Evening. Any parents wishing to discuss their child's report should contact the school office to make an appointment with the class teacher
- ♦ Year 6 are aiming to perform a Leavers' Production for parents based on Hamlet on Monday 19th July in the school grounds at 6pm. Confirmation of details will be sent out nearer the time
  - ♦ School closes for the Summer on **WEDNESDAY** 21st July as follows—
    - Reception & Year 1 finish at 1.15pm,
    - Year 2,3,& 4 finish at 1.30pm
    - Year 5 & 6 finish at 1.45pm

We will do our best to collect siblings for parents at the earliest collection time.



### Bronze Housepoint Certificates

The following pupils have received Bronze Housepoint certificates for achieving 125 housepoints:

Ellis, Ella, & Effie—Ash  
Chay, Daisy, Archie, Layla, Thomas, Flo, Gracie, Ivy, Erin & Lewis—Holly  
Ethan—Holly  
Tristan—Maple  
Charlie, George & Olivia—Chestnut  
Lewis—Cherry  
Albert, Harvard, Imogen, Isla, Harry, Grace & Rose—Beech

### Silver Housepoint Certificates

The following pupils have received Silver Housepoint certificates for achieving 150 housepoints:

Ella—Ash  
Eva, Jaxon, Harper, Jude & Flo—Holly  
Tristan—Maple  
Olivia—Chestnut  
Lewis & Lauren—Cherry  
Lottie, Thiago, Beau, Jenny, Kieran & Kayleigh—Beech

### Gold Housepoint Certificates

The following pupils have received Gold Housepoint certificates for achieving 150 housepoints:

Luca—Holly  
Isabella & Dylann—Beech

### Star Pupil

The following pupils recently received a Star Pupil Award. Well done to you all!

Kaeson —Reception  
Layla —Holly  
George —Maple  
Daisy —Larch  
Charlie —Chestnut  
Jack —Cherry  
Thiago —Beech

### School Uniform

In readiness for September, I would like to remind parents that our new school uniform supplier is S K School Uniforms.

They are based at:

44-46 Chartwell, Riverside, Tamworth, B79 7UG.  
Telephone—01827 705779

Opening times:

Monday—Saturday 7.30am—8.30pm  
Sunday 8.00am—8.00pm

### Covid PCR Tests

The Department for Education has distributed Covid PCR tests to schools.

If you require one for your child, please contact the school office.



### Exciting News!

Miss Court is expecting a baby in November and will be going on maternity leave at some point in the autumn term.

### Art for Relaxation

Arty Folks are running a free 3 week online course—Art for Relaxation—for adults who are struggling with low mood or anxiety and would benefit from some creative 'me-time'.

The first session starts on Monday 21st June between 1pm—3pm

Please register using the link below:

<https://tinyurl.com/2wb3n3rr>

### Warwickshire Police—Safe Parking

The safety of **YOUR** child is paramount and dangerous parking continues to be an issue at Woodside . .

Many of you will already have seen police officers patrolling the area outside school at drop off/collection times. These patrols will continue and parents will receive one warning for dangerous parking. Repeat offenders will receive a fixed penalty notice and a fine of £50.

### Reminder PE Kit

Please ensure your child wears the correct PE kit in school:

- Plain white T shirt
- Plain navy or black shorts
- Plain navy or black sweatshirt
- Plain navy or black jogging bottoms

### Lost Property

We have a large number of sweatshirts and cardigans in the lost property box outside the school office.

If these are not claimed by the end of term they will be recycled.

May I remind parents of the importance of ensuring **ALL** school uniform is clearly labelled with their child's name. At any one time we have over 200 sweatshirts in school and they all look identical.

### Secondary School Place September 2022

Parents of children currently in Year 5 should have received a letter advising them that the application process for applying for Secondary School places for September 2022 opens on Monday 6th September 2021. The closing date for submitting applications is 31st October 2021.

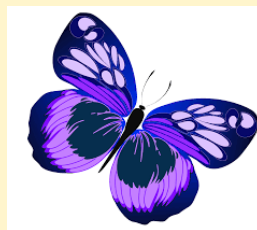
In readiness for this process, if you haven't already done so, please visit [www.warwickshire.gov.uk/admissions](http://www.warwickshire.gov.uk/admissions) to create a parent portal account. If you already have an account, please ensure that contact details etc are up to date.

If you require any further information, please do not hesitate to contact the school office.

### Reception Butterflies

On Wednesday, Reception released our butterflies into the wild. The children have watched them grow from tiny caterpillars, into small brown cocoons and then watched four beautiful butterflies pop out.

We have fed them for a couple of days but knew it was time to say goodbye. The children were so quiet and careful and hoped the butterflies might sit on our hands for a while but they were much too excited and flew off into the sunshine!





### Woodlands Activity Centre Trip

On 14th June 2021, Beech class from Woodside left school at 8.30am to embark on a 50 minute journey to Woodlands Adventure in Aldridge. They were required to bring a number of supplies such as spare clothes (including underwear!), lots to eat and drink, sanitiser and even a small towel! They were permitted this trip as a result of always putting in 100% effort and using lots of flattery to persuade Mrs Simpson to allow the trip to go ahead—something they will never regret!

They left at 8.30am for a long coach journey which lasted until 9.20am. The instructors were very helpful



with getting their belongings sorted before they began. Beech split in to two groups for the morning: one group were to start with raft building and the other would start with the assault course. The raft building was amazing because they wore lots of special harnesses and the lake had a number of different animals like ducks and geese who didn't seem pleased with the rafts in their lake! Lots of people fell in, which others seemed to find very funny. They made the rafts out of barrels and ropes with long wooden planks keeping them together as they were told to do and then flipped them in to the water so they could ride them

The assault course is a series of different obstacles like climbing frames and swing ropes. They took great joy in completing the tasks and

supporting each other when they needed it. Both groups loved the various activities with each one having a different aim and obstacle. Many things such as tyre swings and rock climbing walls are available on the course. In addition to this, the facilities which can be found at the assault course are fantastic; all children and even teachers thrived in each area of the course.



Finally, Beech class spent the afternoon on the high ropes, a group of climbing walls and abseiling activities. The class enjoyed working in the groups to encourage each other and climb as high as possible. High ropes are a structure of ropes, ladders and bars to climb and swing from. Most of the class' favourite activity was called "the Leap of Faith" which is a small platform attached to a wooden pole. They must climb up the pole using the metal rungs and then jump off in an attempt to grasp the trapeze pole. The other tasks include things like ladders and see saw on top of high platforms. The kind instructors showed us what to do in each area and everyone in the group was assigned a role. Most of the class agreed that the most difficult task was a series of alternating challenges set as a huge climbing wall. It begins with two ladders which soon merge into a set of tyres which you have to reach the top of to ascend a rope mesh. All of the children tried their best and overcame fears, learned new things and found a new strong point in climbing.

Overall Beech had a great day at Woodlands Adventure and say they would go again in a heartbeat! The class recommend the activity centre to anyone who loves being outdoors and keeping active.

Year 6 would like to say a big thank you to the PTA for subsidising the cost of this amazing trip!

By Kayleigh